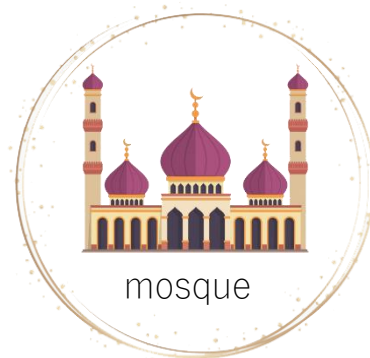




MY TOWN





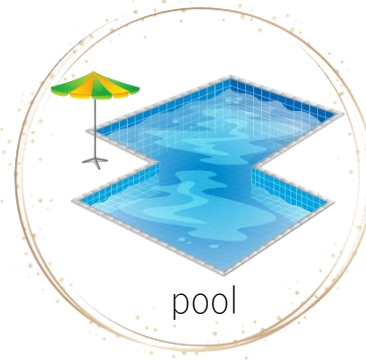
barbershop



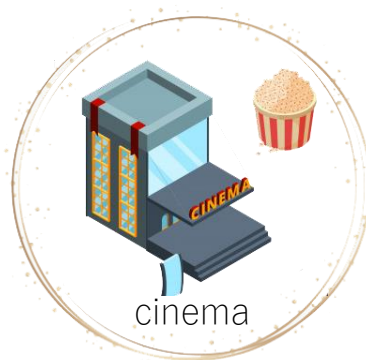
restaurant



playground



pool



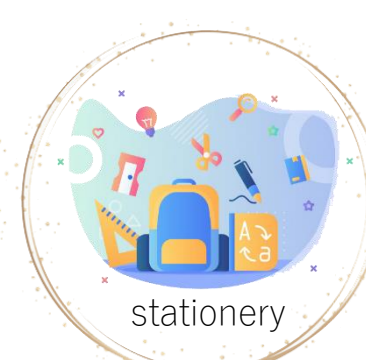
cinema



hotel



butcher's



stationery



supermarket



train station



bus stop



- You get medicine from the pharmacy.
- You buy bread from the bakery.
- You swim at the pool.
- You watch films at the cinema.
- You buy toys from the toyshop.
- You buy meat from the butcher.

Location of things and people



in: içinde
on: üstünde
next to: bitişiginde
near: yakınlarında
around: çevresinde
between: arasında
in front of: önünde
opposite: karşısında
on the corner: köşesinde

Where is the library?

- It is **between** the restaurant and the laundro-mat.



Where is the school bus?

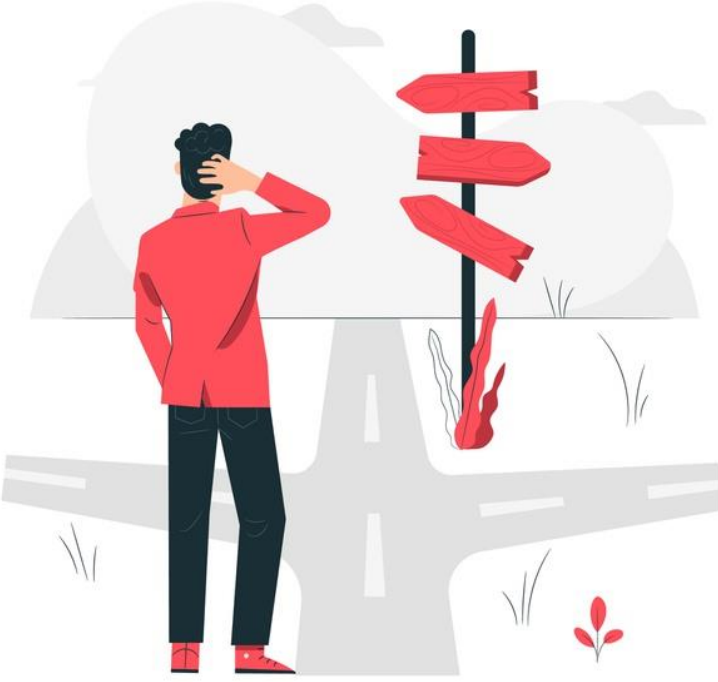
- It is **in front of** the school.

Where are the children?

- They are **in** the playground.



Directions

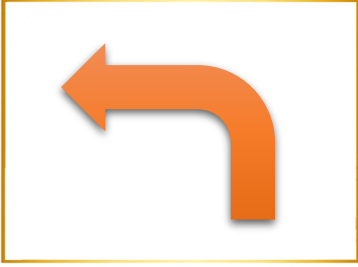


How can I go to the ?

How can I get to the ?

Where is the?

Is there near here?



turn left



go straight ahead



turn right

- Turn left: Sola dön
- Turn right: Sağa dön
- Go straight ahead: Dümdüz git
- Take the first right: ilk sağa dön.
- Take the first left: ilk sola dön.
- Take the second right: ikinci sağa dön.
- Take the second left: ikinci sola dön
- It's on your right: Sağında kalıyor.
- It's on your left: Solunda kalıyor.
- Cross the street: Caddenin karşısına geç



A: Excuse me, how can I get to the cinema?

B: Cinema?

A: Yes, the cinema.

B: Well, go straight ahead. Take the second right. Then cross the Tulip Road. It is next to the supermarket.

A: Thanks a lot.

B: You're welcome.



A: Excuse me, Is there a pharmacy near here?

B: Yes, go straight ahead on West Road. Turn right at the end of the road. It is on your left.

A: Thank you very much.

B: Not at all.

Su.